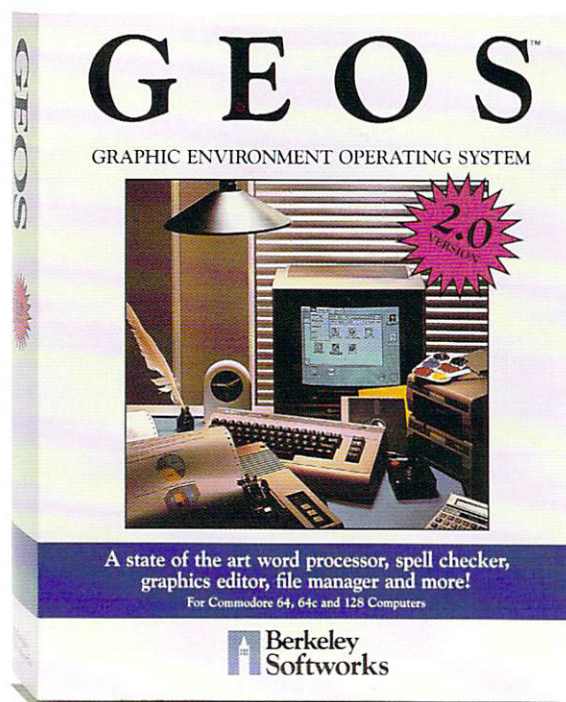


# GEOS 2.0

A POWERFUL NEW  
PRODUCTIVITY ENVIRONMENT  
FOR COMMODORE 64 AND 128 OWNERS

"The latest  
GEOS upgrade  
has virtually  
everything  
users could want..."



Those who  
haven't yet turned  
to GEOS should  
examine this  
extraordinary  
package posthaste!"

—Compute!'s Gazette

GEOS™ 2.0 is supercharged with new strengths that make it the most powerful and versatile source of integrated software your Commodore 64's or 128's ever seen.

Yes, Berkeley Softworks has taken GEOS™, the award winning program with over 1 million copies sold, and has made it even better! Berkeley Softworks has both dramatically improved existing applications and included entirely new applications like geoWrite Workshop™ and geoSpell™ — two programs formerly sold separately. GEOS 2.0 is a great value at less than sixty dollars!

Use GEOS 2.0 for all your home productivity needs — business forms,

professional reports, school projects, club newsletters, personalized stationary, invitations, flyers, and more! And the comprehensive easy-to-use manual (including a tutorial) will have you up to speed with GEOS 2.0 in no time.

GEOS 2.0 is just the beginning! There is an entire family of GEOS products that are fully compatible with one another. This means that you can use geoPublish™, a desktop publisher, geoFile™, a database, geoCalc™, a spreadsheet, geoProgrammer™, a programming authoring tool, geoChart™, a charting program, and other GEOS-based products without ever having to reboot your system or learn a new set of commands.

**Suggested retail \$59.95**

To order, call (800) 443-0100 ext. 234 or visit your local Commodore dealer  
Free customer support and warranty provided

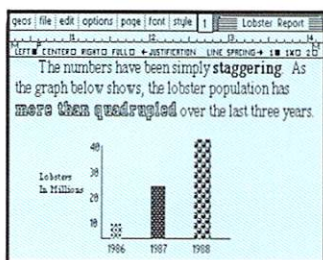


Berkeley Softworks, 2150 Shattuck Avenue, Berkeley, California 94704



# GEOS 2.0

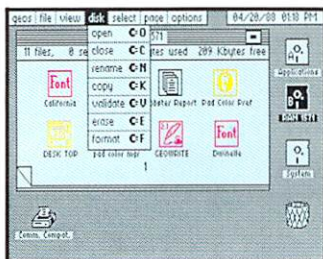
Graphic Environment Operating System



## geoWrite 2.1™ NEW!

**Full-featured word processor**

- individual paragraph formatting
- expand margins to 8" • left, right, center and full justification • single, one-and-a-half and double spacing options • headers and footers • decimal tabs • full page preview • search and replace • word wrap • 10 fonts in 7 styles and multiple sizes • pagination • insert, delete, move or copy • mix text and graphics • special feature to create multiple columns, add headlines and borders • tabs • page breaks • produce near-typeset quality output on LaserWriters™ with PostScript™



## deskTop™

**Efficient file and disk manager**

- view files as icons or text • sort files by size, type, date or name • open, close, rearrange, copy or delete files or disks • load, format, erase, validate, rename, duplicate, retrieve information and print from a disk • access and execute BASIC programs • manage non-GEOS files **NEW** • support for 2 drives (1541, 1571 or 1581) and a Ram Expansion Unit • multiple file selection • easy input and printer driver selection • date and time display • recover deleted files • color coding of files • insert and delete notepad pages • faster file and disk copying with fewer swaps • erase an entire disk without reformatting

## Text Grabber™ NEW!

- import text from any Commodore word processor (Word Writer™, PaperClip™, Speed Script™, Easy Script™ and others)

## geoMerge™ NEW!

- create customized form letters and labels with this mail merge program

GEOS™ 2.0 opens your Commodore 64 or 128 to a new world of integrated and graphically oriented applications. Easy-to-use icons, pull-down menus and windows allow the beginning user to feel right at home with the computer. More advanced users will find the power and sophistication needed for any job. And the "What You See Is What You Get" orientation means there are no surprises between screen and printer.

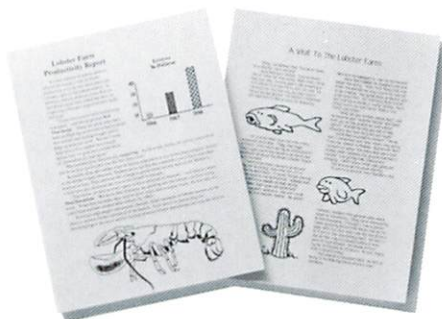
Best of all, GEOS products are fully compatible with each other. This means you can exchange data with other GEOS products such as our database, spreadsheet, desktop publisher and others. GEOS 2.0 is just the beginning of a powerful new environment for Commodore 64 and 128 owners.



## Desk Accessories™

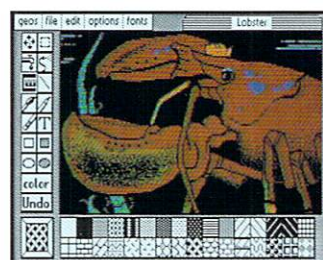
**Five handy utilities accessible from within any application**

- calculator • notepad • alarm clock • screen preference manager • photo/text managers • photo and text albums for saving and transferring graphics and text between applications **NEW** • automatic opening of first photo album on disk • cut and paste options • name photo album pictures • and more



**PLUS** diskTurbo™ runs GEOS applications five to seven times faster

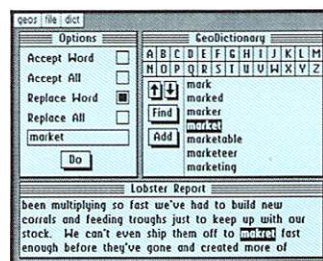
- keyboard shortcuts • keyboard or input device options (mouse, joystick, Inkwell™ lightpen, or Koala Pad™) • Q-Link™ telecommunications software



## geoPaint™

**High resolution graphics editor**

- create charts, diagrams, or images up to 8" x 10" • preview entire page • zoom in for detailed pixel editing • 16 colors, 14 graphic tools, 32 brush shapes, 32 painting patterns • invert, rotate, move or mirror images • cut, copy and paste into other GEOS applications • integrate text with graphics • ruler for exact measurement **NEW** • stretch and scale images • overlay effects • new graphic shapes (ellipses, squares, and connected lines) • stop pattern fills in progress • grid background for easy sketching • constrain and measure tools • and much more



## geoSpell™ NEW!

**Complete spelling resource**

- view dictionaries and documents while spell checking • create and update personal dictionaries • global search and replace • operates 38% faster

**System Requirements:** Commodore 64, 64c, or 128 (in 64 mode); TV or monitor; 1541 or 1571 disk drive; joystick or other input device.

**Recommended Hardware:** Commodore 1351 mouse, Commodore 1764 Ram Expansion Unit, 80 dpi printer.

**Printer Support:** over 70 popular printers are supported with 3 different print modes: draft, Near Letter Quality and high resolution, plus PostScript™ supported Apple® LaserWriters™

© Copyright 1986, 1987, 1988 Berkeley Softworks, Berkeley, CA 94704. All rights reserved. GEOS, deskTop, geoWrite, geoPaint, geoSpell, geoMerge, Text Grabber, diskTurbo, and geoLaser are trademarks of Berkeley Softworks. Commodore 64, 64c, and 128, Easy Script, Speed Script, Inkwell, PaperClip, Word Writer, Koala Pad, Q-Link, PostScript, Apple LaserWriter are trademarks of others.

**Berkeley Softworks**