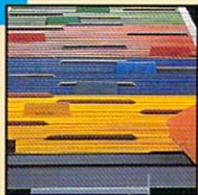
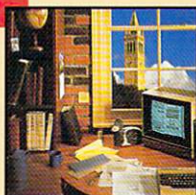
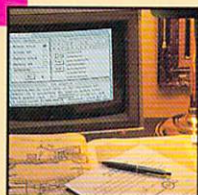
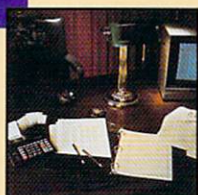
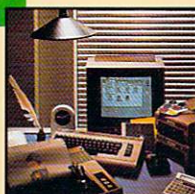


BERKELEY SOFTWAREWORKS' GEOS

PRODUCT CATALOG WINTER 1988



**Berkeley
Softwareworks**

A Few Words About Berkeley Softworks

Berkeley Softworks was founded in 1983 by software and hardware engineers dedicated to bringing new levels of power, sophistication and elegant simplicity to personal computer uses.

As home to the University of California, Berkeley offers access to advanced research, as well as an inexhaustible pool of talented engineers looking for a creative challenge. This means you can expect the most advanced and powerful software possible.

Welcome to the Berkeley experience. We think you'll find that there's really nothing else quite like it.



**Berkeley
Softworks**

The brightest minds are working at Berkeley.

The GEOS Far

■ GEOS—the Graphic Environment Operating System—opens a whole new world for the Commodore 64, 64C, and 128 by bringing the power of a graphic interface to your Commodore computer. Speed and features you've come to associate only with high-priced computers are now available to you at significant savings, and with impressive operational ease.

■ GEOS brings a new look and feel to the C64, effectively unleashing capabilities, speed and program applicability never before realized by the previously untapped system. GEOS additionally enhances the already sleek and powerful 128 by providing 80-column resolution capability and even faster processing. What's more, GEOS ushers in an exciting new world of utility and expandability for both systems.

■ Veteran users will appreciate the speed, versatility, and integration of the many functions, while newer users will enjoy the easy-to-learn, easy-to-use, “non-threatening” orientation of the whole GEOS environment. All users benefit from the integrated diskTurbo™, which speeds up processing five to seven times, while the elegant ease of menus, icons, and windows makes all GEOS products effortlessly accessible. Even data sharing among applications, once a cumbersome and time-consuming chore, is now not only readily available, but also easily implemented. And GEOS offers extensive peripheral support you can rely on now and in the future, a factor which helps preserve your C64 and 128 investments. It's all a part of the GEOS experience.

nily of Products

■ Sophisticated design benefits are further reflected in the GEOS family of products—a wide array of software programs directly responsive to your computing needs, with many more on the way! The variety of product offerings continually expands to reflect both user needs and technical improvements. Berkeley Softworks is committed to providing you with the best products technology allows, and will continue to expand, enhance and improve products as that technology advances. We do this through our on-going investment of resources in research and development—assuring you of exceptional quality, high-end computing features, and timely upgrades.

■ Speed, versatility, breadth of application, utility, expandability, product enhancements, enduring peripheral support—all this and more are yours with the GEOS family of products from Berkeley Softworks.

Enjoy!



**Berkeley
Softworks**

The new operating standards for Commodore computers.

Unprecedented speed, power, high-end features and ease of use are now yours with these exceptional graphic interfaces. Much more than a single product, GEOS and GEOS128 each offer a diverse range of features and applications.

GEOS deskTop™

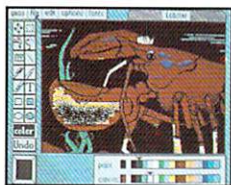
Your graphic interface to the powerful GEOS operating system.

- View files as icons or in text mode.
- Automatically sort files alphabetically, or by size, type or date of last modification.
- Open, copy or delete files in seconds.
- Load or format a new disk; validate or erase an old one.
- Simultaneously supports multiple combinations of disk drives and RAM Expansion
- Manages "non-GEOS" files.
- Menu commands access BASIC and QuantamLink™

**geoPaint™**

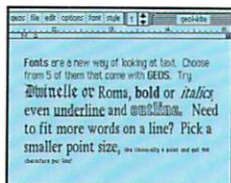
A full-featured color graphics workshop at your fingertips.

- Create charts, diagrams, or full-page images up to 8½" x 11".
- Zoom in for detail, or display the full page.
- Select among:
 - 14 separate graphic tools.
 - 32 different brush shapes.
 - 32 distinctive painting patterns.
- Invert, rotate, move or mirror images.
- Cut, copy, and paste images into other GEOS applications and documents.

**geoWrite™**

An easy-to-use, "what you see is what you get" ("WYSIWYG") word processor.

- Generate up to 64-page letters, reports, or business proposals.
- Use mouse or keyboard cursor control.
- Insert, copy, move, or delete text.



GEOWRITE WORKSHOP™

For the C64, 64C, and 128 (in 64 mode)

GEOWRITE WORKSHOP¹²⁸™

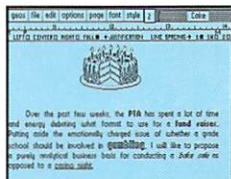
Commodore 128

All the tools you need for effective, efficient, word processing, including text and graphics manipulation and multiple printing options.

geoWrite 2.1™

A full-featured word processing program with many high-end features, including:

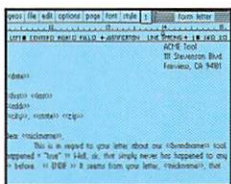
- Keyboard or mouse cursor control.
- Expand margins to a full 8"
- Center, left, right, and full justification.
- Single, one-and-a-half, and double spacing options.
- Individual paragraph formatting.
- Customized headers and footers—up to 1/3 of a page in size.
- Pagination, super- and subscript, search and replace.
- Adjustable margins, decimal tabs, automatic paragraph indents.
- Three different print quality options (draft, NLQ, high resolution)—and much more!



geoMerge™

Increase your output and eliminate many repetitive tasks with this adaptable mail merge program.

- Create personalized form letters with pre-set instructions with **geoWrite**.
- Produce inventory and price tags, data lists, etc., with **geoFile**™.
- Merge groups of address information from **geoDex**™.
- Use with other GEOS applications.



geoLaser™

Produce near-typeset quality output with this Apple LaserWriter support feature.

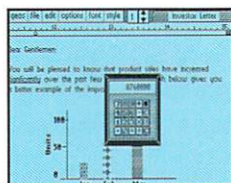
- LaserWriter fonts automatically enhanced for crisp, clean appearance.
- Create multi-column and windowed pages with the overlay print option.
- No LaserWriter? Upload files onto QuantumLink™ for overnight laser printing that's then mailed to you.

- Select among five fonts in a variety of styles (bold, italic, underline, outline) and sizes (ranging from 10 to 24 point, with additional fonts sold separately).
- Adjust margins, eight different tab settings, and page breaks.
- Choose a full-page preview.
- Paste-in graphics from geoPaint.

DeskAccessories™

Use these handy programs while in any GEOS application.

- Four-function calculator.
- 127-page notepad.
- Chiming alarm clock.
- Photo and text albums for saving and transferring graphics and text between applications.
- Cut and paste from calculator and notepad.



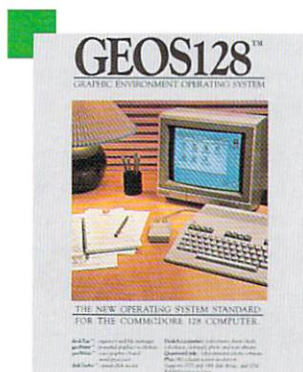
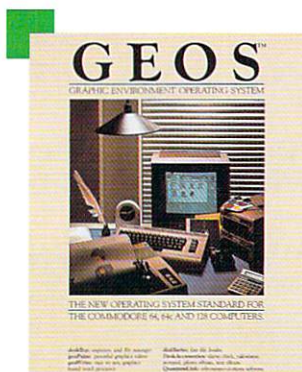
Additional GEOS 128 features:

- See in 80-column resolution.*
- Use additional memory.
- Benefit from 2 MHz processing.
- Utilize the numeric keypad.
- Rely on additional peripheral support.

*Requires 80-column RGBI monitor. Color in 40-column mode only.

Plus:

- **diskTurbo™** speeds disk access on reads and writes five to seven times faster.
- **Printer and Input Drivers.** Twenty-four printer driver files support over 70 popular printers, while four different input drivers enable use of a joystick, lightpen, Koala Pad™ or a proportional mouse.
- **Peripheral Support: 1764 RAM Expansion Unit (C64/ 128); 1750 RAM Expansion Unit (C128 only); 1541, 1571 and 1581 disk drives.**



Text Grabber™

Convert existing documents to the GEOS environment from other word processing programs.

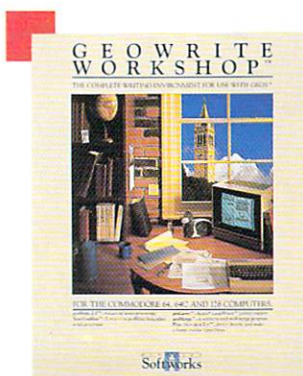
- Paste in graphics.
- Change fonts—over 20 distinctive fonts and styles available in **Fontpack 2™**.
- Use **geoLaser™** to produce on the Apple® LaserWriter™.
- Reformat new files with ease.
- Paper Clip™, Easy Script™, Speed Script™, Word Writer™ files ported with formatting commands intact.



Additional GEOWRITE WORKSHOP 128* features:

- See in 80-column resolution*.
- Use additional memory.
- Benefit from 2 MHz processing.
- Utilize the numeric keypad.
- Rely on additional peripheral support.

*Requires GEOS128



GEOPUBLISH™

C64, 64C and 128 (in 64 mode)

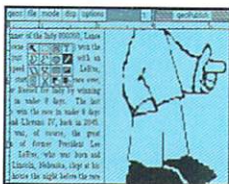
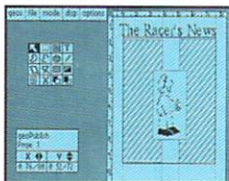
This sophisticated, full-featured desktop publishing program adds professional polish to all your productions. Experiment with the vast array of options, features, menus and toolboxes on your way to becoming your own publications coordinator.

- Establish margins, graphic areas or rectangular spaces.
- Create custom multi-column layouts.
- Utilize library of 21 predefined layouts for newsletters, reports, pamphlets, etc.
- Mix text and graphics.
- Use eight guidelines for horizontal or vertical arrangements.
- Save master pages for easy recall and repeated use.
- Lay out headlines, columns and graphic regions.
- Move or resize text easily.
- Automatically reformats and updates files.
- Lay in text from **geoWrite** files.
- Text flows into place—it even wraps around graphics.
- View a full-page layout, or zoom in for fine tuning.
- Use the near-word-processing text editor to change already-formatted text.
- Take advantage of a full range of font sizes and styles.
- Use specialized toolboxes with over 25 discrete functions.
- Import graphics from **geoPaint**, **Graphics Grabber**, and other GEOS applications.

And so much more!

Plus:

- Supports Apple LaserWriter, and all GEOS-supported printers.
- Automatically converts earlier geoWrite files to GEOS 2.1.



GEOSPELL™

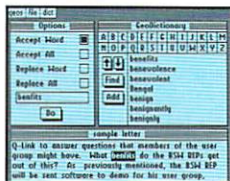
C64, 64C and 128 (in 64 mode)

A complete spelling resource to help locate and correct misspelled words quickly, easily and accurately.

geoSpell™

Find and correct misspelled words in any geoWrite document.

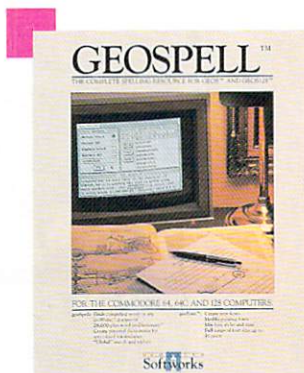
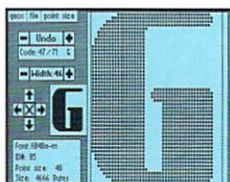
- Deploy the 28,000-plus-word geoDictionary™
- Create personal dictionaries for specialized vocabularies.
- Automatically scans geoDictionary alongside personal dictionary.
- Employ "global" search and replace options.
- Edit and update personal dictionaries at any time.



geoFont™

Enhance the appearance of any document by customizing fonts to your liking.

- Create new fonts.
- Modify existing fonts.
- Mix font styles and point sizes.
- Use a full range of font sizes—up to 48 point.



GEOFILE™

C64, 64C and 128 (in 64 mode)

GEOFILE128™

Commodore 128

The filing system that manages data simply and easily.

geoFile

Store everything from recipes to invoices and investments, and find them fast.

- Design custom forms (up to 8½" x 11")
- Print more than one form per page.
- Integrate geoPaint graphics.
- Sort data automatically. Perform searches quickly.
- Add new fields or rearrange existing ones.
- Print special sections, or entire forms.
- Use layouts to print data-base forms 16 different ways.
- Make address labels, index cards, price tags—anything you choose.
- Transfer data to geoCalc™ for major number crunching.



geoMerge™

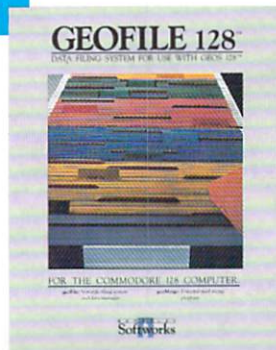
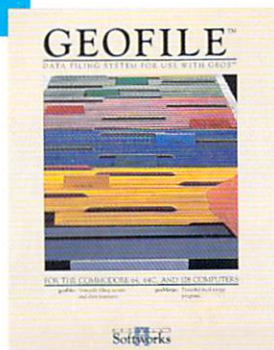
Increase your output with this adaptable mail merge program.

- Create personalized form letters with pre-set instructions with geoWrite.
- Produce inventory and price tags, data lists, etc., with geoFile.
- Merge groups of address information from geoDex.

Additional GEOFILE 128* features:

- See in 80-column resolution*
- Use additional memory.
- Benefit from 2 MHz processing.
- Utilize the numeric keypad.
- Rely on additional peripheral support.

*Requires GEOS128



DESKPACK™ NOW INCLUDES GEODEX!

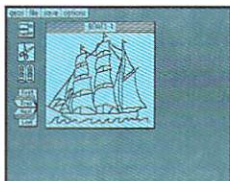
C64, 64C and 128 (in 64 mode) Commodore 128

Four desk accessories and two applications designed to further enhance and refine your computing experience. Designed to work in either 40 or 80" column resolution.

Graphics Grabber™

Transport clip art graphics from other programs for use in the GEOS environment.

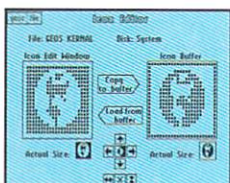
- Convert Print Shop™, PrintMaster™, and Newsroom™ artwork and graphics libraries for use with geoWrite and geoPaint.
- Copy singly or in groups quickly and easily.
- Place exactly the graphic you want exactly where you want it.



Icon Editor™

Personalize existing file icons, or create complete originals.

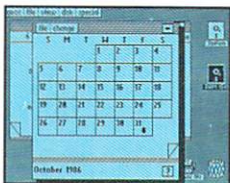
- Convert non-GEOS files to the GEOS format.
- Create customized icons for ported documents.
- Modify existing GEOS program icons.
- Retains file integrity without altering contents.



Calendar

An appointments secretary to help organize your schedule.

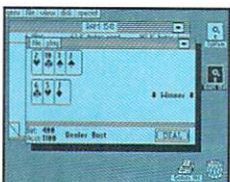
- Open this desk accessory while working on any GEOS application.
- Record upcoming events.
- Take notes for future reference, and attach to particular dates.
- Look at a full month at a time.
- Maintains calendar accuracy to the year 9999.
- "Cut and paste" calendar pages.



Black jack

An authentic simulation of the classic game of chance.

- Contains a true 52-card deck for card-counting accuracy.
- Casino-style play includes hand splitting, double down and insurance.
- Restart when you go bust. Rather, if.



geoDex™

This electronic card file gives you total recall.

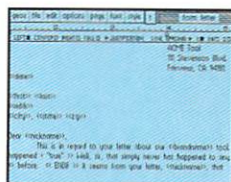
- Store names, addresses, phone numbers, and related information.
- Organize by group, or alphabetically.
- Perform searches.
- Cross list an entry in up to three separate groupings.
- Print phone lists, two kinds of address labels and all your geoDex data.
- Utilize autodialing for greater phone efficiency.



geoMerge™

Increase your output and eliminate many repetitive tasks with this adaptable mail merge program.

- Create personalized form letters with pre-set instructions with geoWrite.
- Produce inventory and price tags, data lists, etc., with geoFile.
- Merge groups of address information from geoDex.
- Use with other GEOS applications.



Plus:

- Improved deskTop for use with GEOS.
- Several new printer and input drivers.
- New features to improve printing performance.

*Requires GEOS128

GEOPROGRAMMER™

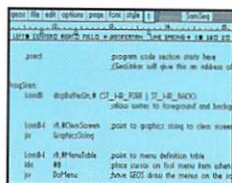
C64, 64C and 128 (in 64 mode)

This complete assembly language development gives you the power to create full-scale GEOS applications which take full advantage of icon, menu and window interfaces—an ideal learning environment for assembly language.

geoAssembler™

Utilize all the features you expect in a professional assembler.

- Support macros, complex expressions, conditional assembly, and nested include files.
- Create source code in **geoWrite™**.
- Highlight portions of your program with different fonts or special text effects like italics.
- Paste graphics from **geoPaint™** directly into your source code.
- Automatically convert graphics into binary data.



geoLinker™

Take multiple assembly files and link them into runnable programs.

- Generate GEOS sequential applications, VLIR applications, and desk accessories complete with customized header and icon information.
- Generate standard Commodore applications which do not require GEOS to run.
- Supports dynamic overlay modules, allowing the design of programs which are much larger than the available memory.



geoDebugger™

Now you can instantly toggle between the hi-res GEOS application screen and a text mode debugging screen.

- Supports full symbolic disassembly and line assembly using the labels and equates from your program.

- Find any routine in memory by simply typing its name.
- Automatically enters new addresses in the symbol table.
- Recognizes over 80 unique and powerful commands for assembling, disassembling, single-stepping, setting breakpoints, displaying variables, etc.
- Contains a complete macro language for automating keystrokes and customizing the debugger commands.
- Create macros directly in **geoDebugger** or in **geoWrite**.
- Automatically loads macros at the start of a debugging session.

```

00460 05 47 63 6F 73 7C 44 63 .show fi
00468 4C 48 05 53 61 6D 70 4C .la temp1
00470 45 53 65 71 20 43 68 66 .msg inf
00478 4F 00 62 6C 4F 73 65 00 .clone.
re
0400 ProgStar > lda #000
0400 ProgStar+002 > sta diagbuff
0404 ProgStar+004 > lda #004
0404 ProgStar+004 > sta r08
0408 ProgStar+008 > lda #018
040A ProgStar+00A > sta r0C
re
0402 ProgStar+002 > sta diagbuff
0404 ProgStar+004 > lda #004
0404 ProgStar+004 > sta r08
re
&lt;
X Y PC SP WP-MISC MemMap
004 000 000 00404 0F0 00100000 00110000

```

Plus:

- Contains over 400 pages of documentation.
- Contains files with complete listings of GEOS equates and macros.
- Contains commented source code for three sample GEOS applications.

FONTPACK2™

C64, 64C and 128

Diverse font styles in a wide range of point sizes for use with geoPaint, geoWrite, and GEOS applications.

America
Bancroft
BOWLES
Callaghan
Cursive
DANA
Ellsworth
Eshtemen
Etohevery
Flints
Haste
Kensington
Kips
Lewis
Moffit
Oxford
SOLANO
Spots
Stem
Venetian
Wheeler

partial listing

Product Price List

Software

Product:	Catalog #:	Price:
<i>(64, 64C)</i>		
GEOS 1.3	1120	59.95
GEOCALC	2103	49.95
GEOPUBLISH	2105	69.95 NEW!
GEOWRITE WORKSHOP	2101	49.95
FONTPACK2	3006	29.95
GEOPROGRAMMER	2109	69.95 NEW!
GEOFILE	2104	49.95
GEOSPELL	3004	29.95 NEW!
DESKPACK	3005	49.95 NEW!
<i>(128 products)</i>		
GEOS128	1101	69.95
GEOWRITE WORKSHOP128	2105	69.95 NEW!
GEOCALC128	2107	69.95 NEW!
GEOFILE128	2106	69.95 NEW!

Prices subject to change without notice.

©Berkeley Softworks, 1986, 1987. All Rights Reserved. GEOS, GEOS128, deskTop, geoPaint, geoWrite, DeskAccessories, diskTurbo, GEOWRITE WORKSHOP, GEOWRITE WORKSHOP 128, geoWrite 2.1, geoMerge, Text Grabber, geoLaser, GEOCALC, GEOCALC128, GEOPUBLISH, GEOPUBLISH128, GEOFILE, GEOFILE128, DESKPACK, Graphics Grabber, Icon Editor, GEODEX, geoMerge, GEOSPELL, geoDictionary, geoFont, FONTPACK, GEOPROGRAMMER, geoAssembler, geoLinker, and geoDebugger are trademarks of Berkeley Softworks, Berkeley, CA 94704. Commodore 64, 64c and 128, Easy Script and Speed Script are trademarks of Commodore Electronics, Ltd. Apple is a registered trademark, and LaserWriter a trademark, of Apple Computer, Inc. PaperClip is a trademark of Batteries Included. QuantumLink is a trademark of Quantum Computer Services, Inc. PrintShop is a trademark of Broderbund Software, Inc. PrintMaster is a trademark of Unison World, Inc. Newsroom is a trademark of COMPUTE! Publications, Inc. Word Writer is a trademark of Timeworks, Inc. Koala Pad is a trademark of ITC Koala, Inc. geoFont is licensed for use by Berkeley Softworks by arrangement with Arthur J. Dahm III.

