



PROPHET64
SID MUSIC SOFTWARE

Glenn Holmer
CommVEx Expo
July 29, 2006

Prophet64

- What is Prophet64?
- How can I get it?
- How do I use it?
- What else can I do with it?
- Demo (if all goes well...)
- Q & A

What is Prophet64?

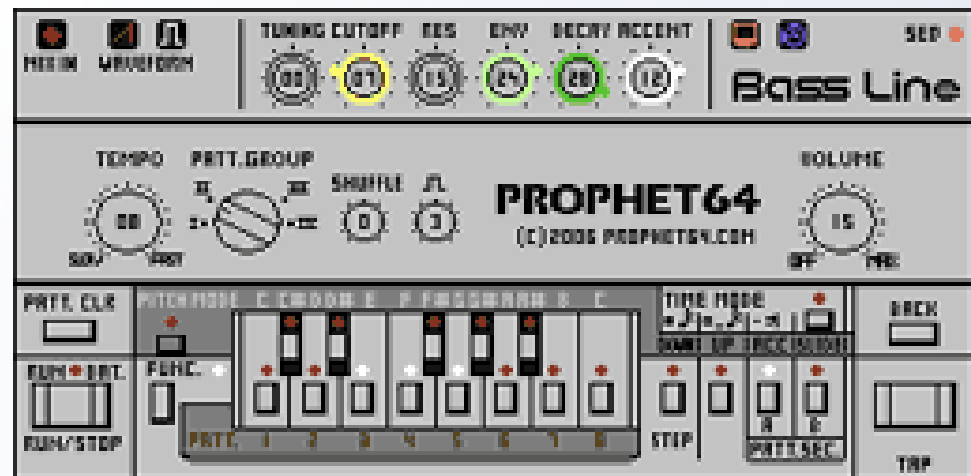
- Commodore 64 software to emulate the early Roland synthesizers that have now become fashionable again:
 - TB-303 ("Transistor Bass")
 - TR-606 Drumatix ("Transistor Rhythm")
 - introduced 1982, discontinued soon after
 - popular in house music from late 80's onward
- the "retro" sound of the Commodore 6581/8580 SID has also come back into fashion
- two versions: free trial (distributed as a .D64 image), and full version (distributed as a cartridge)
- not all docs are available yet, requires some exploration via "key mashing"

User Interface Comparison

- Roland TB-303

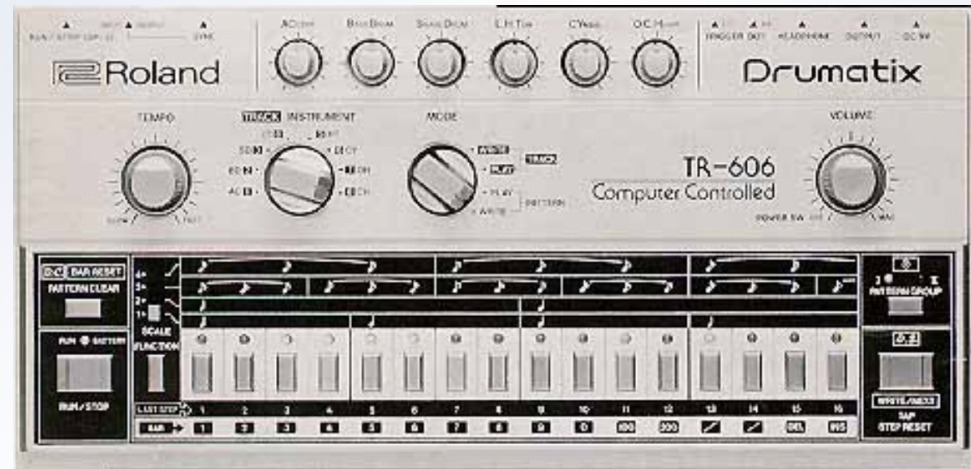


- Prophet64 Bass Line

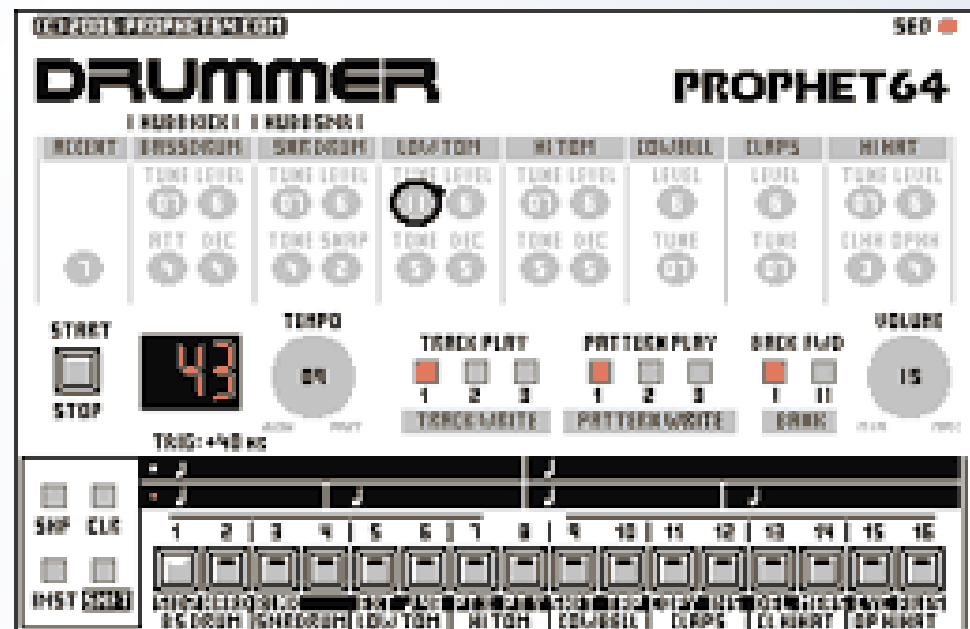


User Interface Comparison

- Roland TR-606

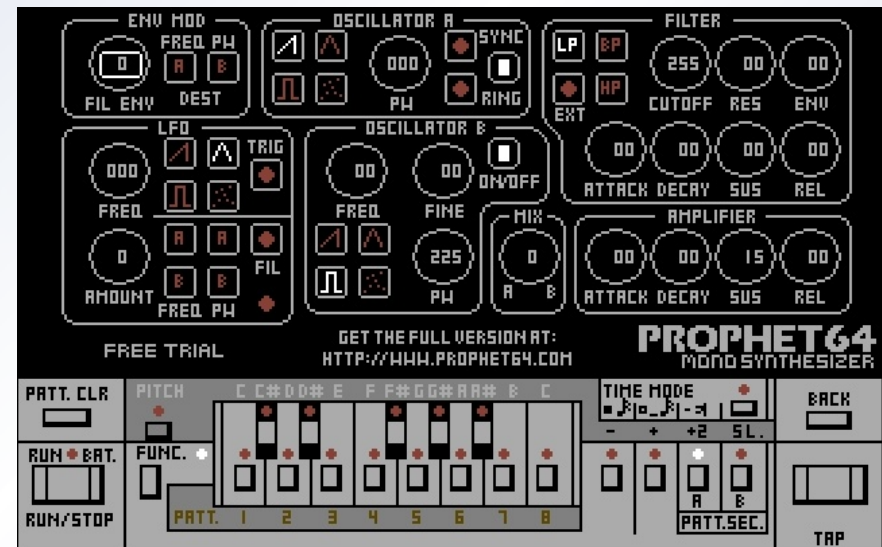


- Prophet64 Drummer



Prophet64 Mono Synthesizer

- Trial version (.D64)



- Full version (cartridge)



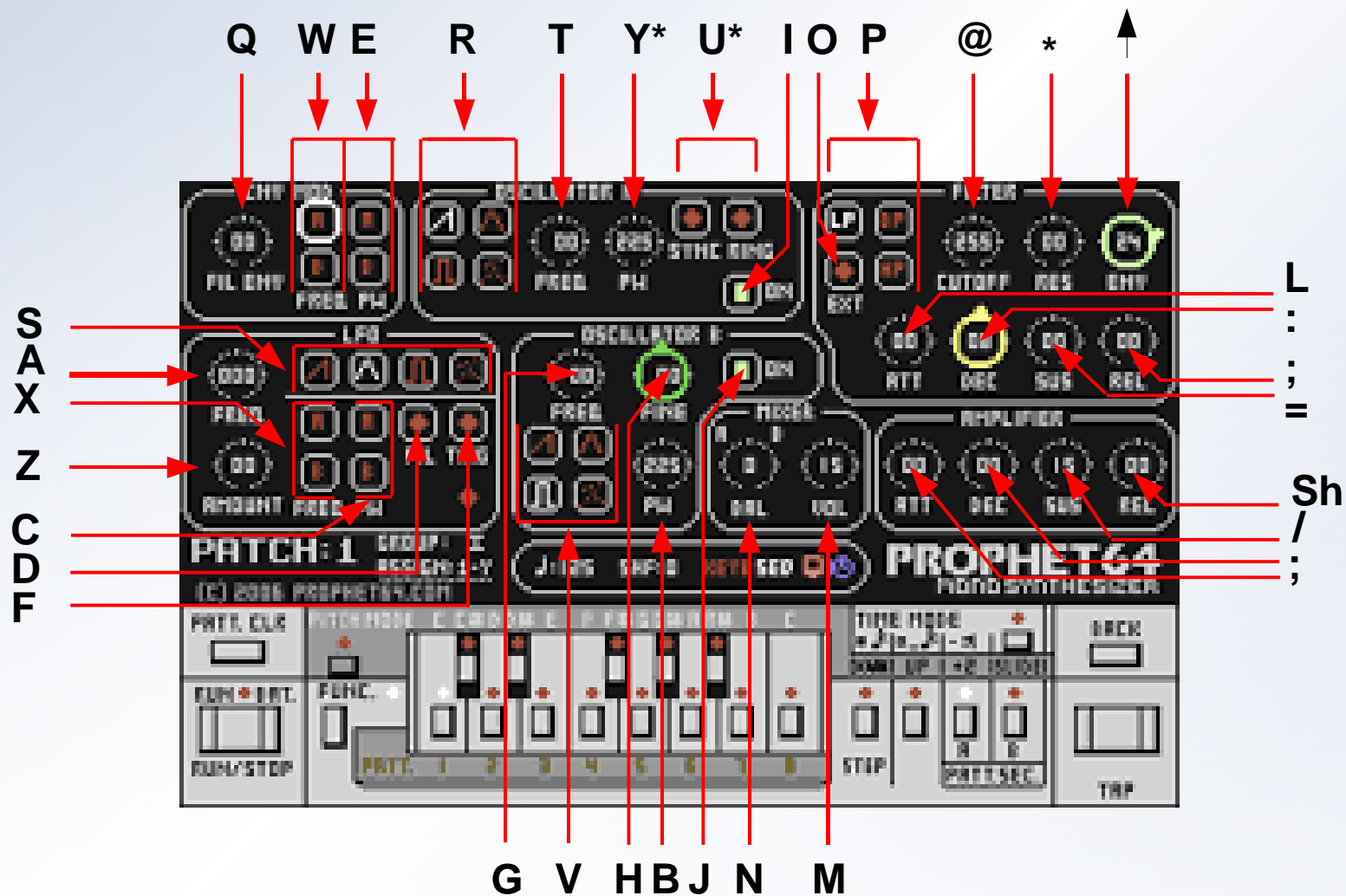
How can I get Prophet64?

- trial version available for download at the website:
<http://prophet64.com/>
- cartridge version can also be ordered there (39 EUR)
- ships from Sweden
- forums at <http://www.prophet64-forum.com/index.php>
- want the t-shirt? mouse pad? coffee cup?
<http://www.cafepress.com/prophet64>

How do I use Mono Synthesizer?

- for D64 version, read the docs, then load 'n' go...
- hit control for setup screen, a pair of paddles can be used for input devices (may be problematical)
- loading a patch set (.P64) will override selection of joystick/paddles
- support for 2nd SID via SID2SID; *may* also work with a stereo SID cartridge and an expander like Aprospand or CARDBOARD/5
- for cartridge version, not all docs are available yet:
 - unshifted cursor keys select underlined functions
 - C= + unshifted cursor keys select within that function
 - “assign” means select item that paddle controls
 - see next page for key assignments

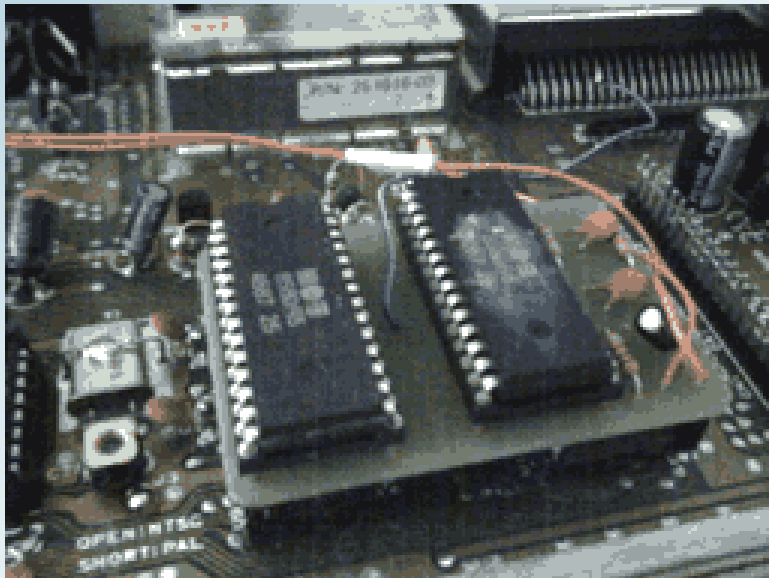
Keyboard Controls



*paddle may not work

What else can I do with Prophet64?

- SID2SID



A bare circuit board marked with component outlines, and instructions for installing two SID chips (to avoid the maze of wires typically associated with piggy-backing two SIDs inside the machine). Available as a “package deal” with the cartridge version.

What else can I do with Prophet64?

- plans for a MIDI interface available from <http://www.firestarter-music.de/prophetcart/>
- another hobby project that must be assembled from parts



What else can I do with Prophet64?

- GetLofi's pot mod:

<http://www.getlofi.com/2006/06/c64-knob-mod-for-prophet64.html>



What else can I do with Prophet64?

- M64: <http://kikencorp.com/8gb/m64/>



One Step Beyond...

- http://www.ucapps.de/midibox_sid.html



MIDIbox SID features more software implemented high-resolution modulation sources (LFOs, EGs), independent sound engines for all 3 voices and a low-latency MIDI interface (no note drops...) - these capabilities can only be realized with a CPU that runs much faster than the 6502.

Demo / Q & A

Resources:

- <http://www.prophet64-forum.com/index.php>
Prophet64 forums
- <http://www.tb-303.org>
(resources on the original TB-303)
- <http://en.wikipedia.org/wiki/TB-303>
(self-explanatory)
- <http://www.artofcolor.com/tb303/>
(TB-303 manual and schematics)
- <http://c64music.blogspot.com/>
(radical C64 mods)